

BOULEVARD

ISSUE NO.66 AUGUST 2017 八月

DEFINING VANCOUVER LIFE AND LUXURY

新居生活

THE EVER-CHANGING
JACKIE CHAN

成龍：
我一直在變！
變！變！

CRUISING
THE WORLD
AT HOME

頂級奢華：
住在家裡游世界



LET'S SING
歌唱吧 KRUG!

AN ISLAND
PARADISE
SOOKE
POINT
島上天堂

3D PRINTING ARTWORK 媲美真品的3D打印藝術品

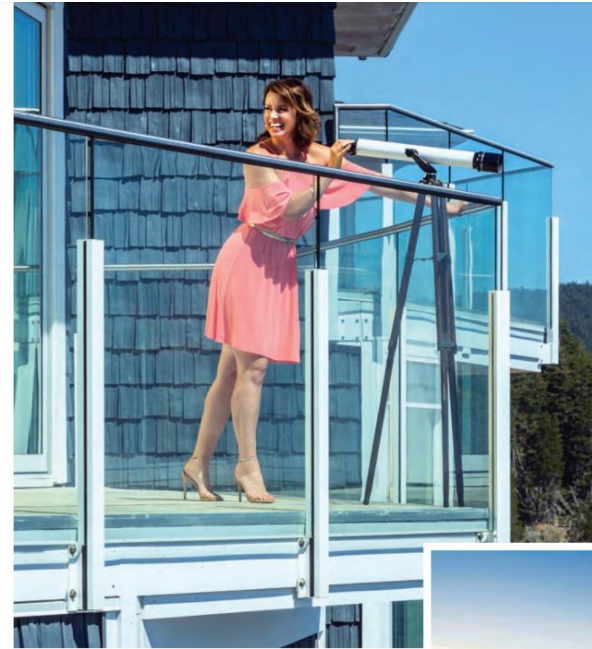
A curvaceous country road on Vancouver Island winds to the south-west tip of Canada. Here volcanic lava flowed 50 million years ago, deep into the Salish Sea. And on the sunset side of 3,600 acres of permanently protected wilderness is SookePoint, a clover-leaf shape peninsula surrounded by water on 7 of 8 sides - almost an island unto itself.

In 1996, Roxanne and Michael Thornton acquired the property, which marine charts show as 'Possession Point'. Before breaking ground in 2014, they travelled to many of the finest resorts, spas and exotic locales, to ensure their plans were as thoughtful as possible.

but with all the security, stability and comforts of home. With special approval to build a mere 15 feet from the ocean (but by choice 22 feet or more above), cottages and suites feature nautical decks, large swivel captain chairs, and a set of turning great room and deck stools so residents and guests can scan for action anywhere across the sky and seascape.

"We use prow-shape decks for some of the same reasons you have a bow on a boat — to improve the view forward and down both sides, plus to cut the sea breeze. And because you're so close to the water it feels you're yachting, experienced boaters sometimes soften their knees in anticipation of swaying with the

AT SOOKEPOINT YOU HAVE CENTRE FRONT ROW SEATS TO WATCH EXCITING MARINE ACTION; IT'S A FULLY IMMERSIVE IMAX EXPERIENCE.



"SookePoint Ocean Cottages are really just the picture frames," explains Michael, "the true masterpiece is all of Nature's Living Art that surrounds us."

Interiors have a distinct juxtaposition of traditional Victorian elements combined with indigenous wild west coast touches and seaside cottage ambiance. Floor plans range in size from 700 square feet to an impressive 3,000 square feet. Old-world crown moldings and indirect lighting are paired with rugged stone, quarried from the peninsula. Neutral pallets and natural elements ensure that the brilliant outdoor colours are not diminished. Platforms with storage elevate mattresses so you can even watch whales while lying in bed. And Ocean Cottages and Yacht Suites are fully finished prior to purchase, complete with all appliances, kitchenware, bedding, designer furnishings, art and accessories.



"We believe this piece of paradise on Canada's South Pacific is an exceptional property, deserving of world-class recognition", Roxanne explains.

"The tides and surf that ebb and flow along our washboard foreshore hyper-oxygenate the marine environment, creating a rich undersea garden. The little fish attract the big fish, and so spins the circle of life. The orcas and marine mammals come too, for the same reason we find the kitchen. At SookePoint you have centre front row seats to watch exciting marine action; often a fully immersive IMAX experience!" shares Michael.

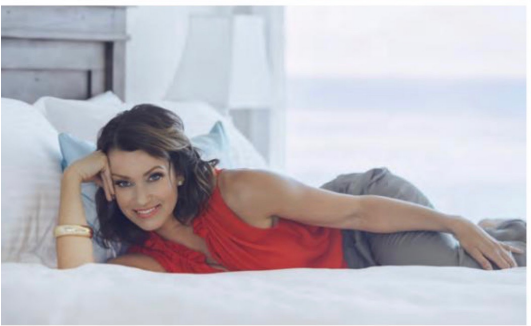
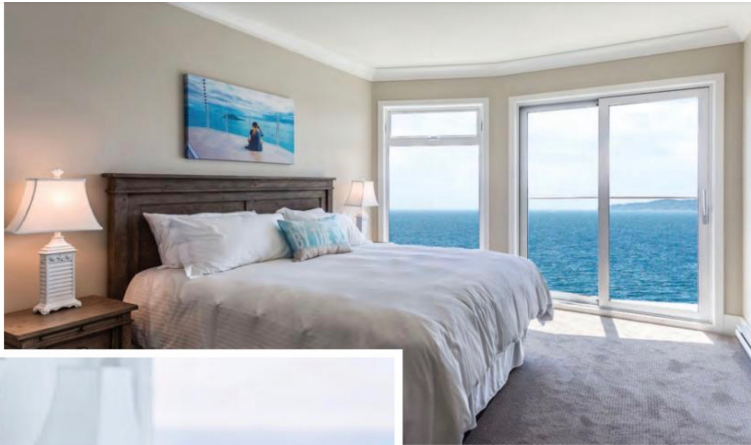
To more fully inhabit the natural environment, SookePoint 'Ocean Cottages & Yacht Suites' are designed somewhat like maritime ships,

waves," explains Michael. "But here, when everyone slides over to watch the whales below, no one rocks the boat," he chuckles.

On board, you can hear the surging surf churning around the gnarly old lava rock, smell the fresh sea air, and enjoy wrap-around views of the adjoining wilderness park, snow-capped Olympic Mountains and romantic sunsets that linger over the open ocean.

Ocean Cottages have over-size sliding glass walls overlooking 200,000 acres of sprawling ocean, forest and mountain park vistas. The glass walls also act as an interface zone to adjust surround-sound acoustics, which can vary dramatically depending on weather and sea. Open for maximum effect; closed and it's unexpectedly quiet.

Photo Credit: Courtesy of Sooke Region Chamber of Commerce, Photographer: Holly Watson



Exteriors feature trellis arbor entries with wrought iron gates, natural stone planter walls filled with overgrown native greenery and privacy walls. Cottages shine in a beachy, ocean-teal colour, contrasted by clean and bright white trim with front window shutters. From the street, cottages look like charming little bungalows, nestled within a coastal garden. Yet they each stretch down several levels for a more intimate relationship with the sea.

While all Ocean Cottages are anchored to the volcanic rock with steel rods, new phases will use a custom combination of energy efficient insulated concrete forms, Helix micro rebar and reinforced steel.

"There's no better foundation than our volcanic iron-rich basalt rock," Michael explains, "so we are honoring where hot lava married the cool sea by making new Ocean Cottage floors and walls of exceptionally strong insulated concrete and steel, all the way to the roof."

After 64 public meetings long ago, the land was approved for comprehensive zoning that is hybrid by design. Owners can make this seaside community their home, get a traditional mortgage and live here full or part time. But they also have the flexibility to earn premium overnight resort income if they choose to rent when not in residence. There is full title strata ownership, a small selection of private homes and adjacent building lots, and even land set aside for a small village centre.

Adjoining SookePoint is a protected wilderness park, featuring 50 km of nature trails and 10 km of pristine waterfront, ideal for kayaks, bird watching and fishing for halibut and salmon. As the next wave of pre-sold ocean cottages are delivered, plans include a dock, fitness centre and restaurant serving up fine west coast cuisine.



Surrounded by virgin shorelines, with marine birds and mammals as neighbors, SookePoint is a hidden gem in super-natural British Columbia. With the least rain on the wild west coast and the warmest winters in country, the south-west tip of Canada can become an iconic destination for the discerning traveler seeking memorable experiences on the dramatic leading edge of nature.

Whether arriving by plane or by ferry, SookePoint is less than 2 hours from Nanaimo, and under an hour from anywhere in Greater Victoria. Although only half hour from theatres, restaurants and superstores, SookePoint feels far more remote – as though you have already set sail!

SookePoint Ocean Cottages are a BC Children's Hospital Dream Lottery Grand Prize Home Supplier. Visit www.bcchildren.com ■